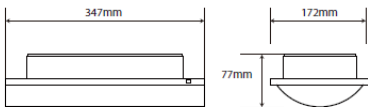
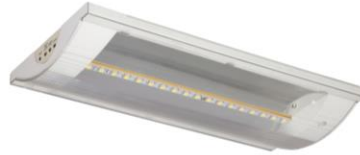


EMERGENCY

UNIVERSAL EMERGENCY SELF-TEST LED BULKHEAD



LED FUNCTIONS GUIDE			
Green	Yellow	Red	Status
●	○	○	Normally charging mode
○	●	○	Battery insufficient capacity
○	○	●	LED failure
○	*Fast flash	○	Self-test or manual test
○	*Slow flash	○	Normally emergency discharging

Code:	R8MUSTLED-01
Comparable to:	T5 Fluorescent
Light Output L₁₀₀ Std/Em(lm):	200/100
Beam Angle (deg):	120
Illuminance @ 1m (lx):	100
Colour Temp L₁₀₀ (k):	4,000
CRI L₁₀₀ (Ra):	75
Total Power Consumed (W):	4.5
Efficacy (lm/cctW):	45
Power Factor:	>0.5
Rated LED life (hrs):	30,000
Ingress Protection (IP):	40
Ambient Operating Temp (°C):	+5 < T _a < +45
Cut-out (mm):	275 x 130
Min Order Qty/Carton Qty:	1/12
Weight (Kg):	1.2
Warranty (yrs):	2
Dropped Legend Accessory:	R8MULK

Complying with the requirements to provide good emergency lighting and probably more importantly, ensuring it is operational, is an onerous responsibility. This Self-Test LED emergency fitting provides an excellent solution. It tests itself regularly and informs of any potential battery or light failure problems identified during the test by illuminating the status LED's. Remedial action can then be taken. For all building types, recessed or surface mounted, wall or ceiling mounted, it combines attractive aesthetics with the latest Surface Mount LED technology to provide functional, long life, energy saving fittings with optional dropped legend accessory.

FEATURES

BENEFITS

- | | |
|--|---|
| <ul style="list-style-type: none"> • 18 high quality, high CRI SMD LED's provide <ul style="list-style-type: none"> ○ Excellent light output of >200 lumens ○ Very low power consumption of only 4.5 W ○ Solid state technology <ul style="list-style-type: none"> • No filaments to break or electrode seals to fail which is often a cause of many traditional light source failures • Rugged and less susceptible to failure through knocks, building vibration and hot to cold temperature fluctuations | <ul style="list-style-type: none"> • High CRI ensures good light quality for excellent visibility and image reproduction • When compared to linear fluorescent: <ul style="list-style-type: none"> ○ Provides similar light output ○ Saves 50% energy • Has a rated LED life of 30,000 hours, many times that of traditional light sources so no inconvenient lamp failures • Provides instant full light output |
| <ul style="list-style-type: none"> • Self-Test Function <ul style="list-style-type: none"> • Complies with BSEN 62034 2006 • 15 minute test once a week • 3 hour test once every 6 months • 3 LED indicators to provide fitting status, condition and any problems for rectification | <ul style="list-style-type: none"> • Reduced maintenance • British & European standard for self test systems • Simple automatic emergency test function • Ensures the tests are carried out • No wiring required to E-test key switch • No one required to carry out tests • Time and cost saving • No damage to decor in retrofit installations |
| <ul style="list-style-type: none"> • Surface or recessed three-in-one fitting <ul style="list-style-type: none"> • Bulkhead • Exit box using choice of 4 supplied legends • Blade Dropped Legend | <ul style="list-style-type: none"> • Provides solutions for all applications in a building installation |
| <ul style="list-style-type: none"> • Polycarbonate body and clip on cover | <ul style="list-style-type: none"> • Strong damage resistant material for long life • Fast and simple access for connection and installation • Quick lamp change access when required • Provides easy dropped legend conversion |
| <ul style="list-style-type: none"> • First fix base with 2nd fix push fit body | <ul style="list-style-type: none"> • No damage to main body whilst decorating |
| <ul style="list-style-type: none"> • Maintained or non-maintained operation | <ul style="list-style-type: none"> • Provides illumination as a standard maintained/switched fitting or can be wired to provide emergency lighting only when mains power fails |
| <ul style="list-style-type: none"> • 2 year guarantee | <ul style="list-style-type: none"> • A quality energy efficient long life product • Peace of mind |

PLEASE NOTE – INFORMATION CONTAINED IN THIS DOCUMENT IS SUBJECT TO CHANGE WITHOUT PRIOR NOTICE